

# Marys River Quilt Guild **Album**

May/June 2004  
Volume 15, No. 3

## MAY 27<sup>TH</sup> PROGRAM WITH BOB PURCELL



Please plan on joining us for the May 27th program, our honored guest will be Mr. Bob Purcell, owner of Superior Threads from St. George, Utah. Bob will be giving a very informative talk on threads & needles.

Learn to achieve those perfect stitches with the proper tension & other helpful hints with Bob's help in Thread Education.

(Aka Ph.D in Threadology!) Free thread will be given away to each person in attendance.

## JUNE 24<sup>TH</sup> PROGRAM DR. ELIZABETH HOFFMAN

Liz will be giving an informative presentation on the Elizabeth Saville Lewis quilts (aka Cockrell Quilt collection.) She will also give an update on the status of the Quilt County 2005 exhibit and fundraiser (the exhibit is scheduled for September 2nd thru October 15th of 2005). Irene Zenev will be there to present her ideas regarding the exhibition and fundraiser as well, see you then.

Thanks for all of you that participated in Karla Alexander's class, it was a great time, and a well attended class.

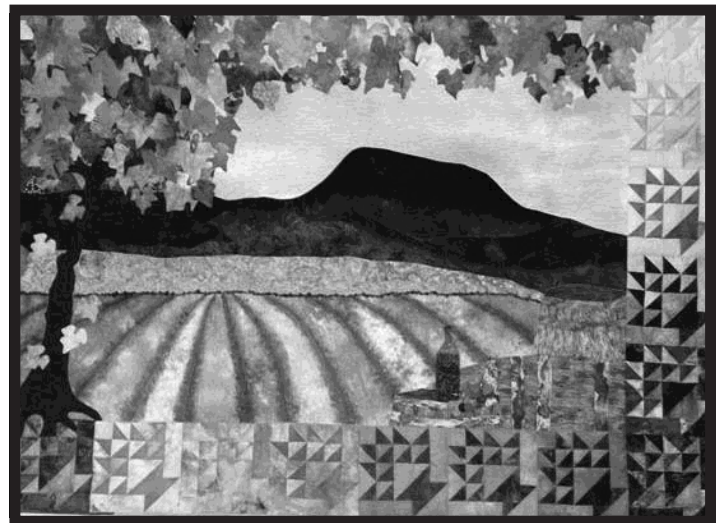
I was absolutely amazed at how many different variations each quilt had. If you were in the class, please plan on bringing your lovely quilt to guild sometime for Show & Tell.

Linda Alexander Program chair

## 2004 RAFFLE QUILT UNVEILED AT APRIL MEETING

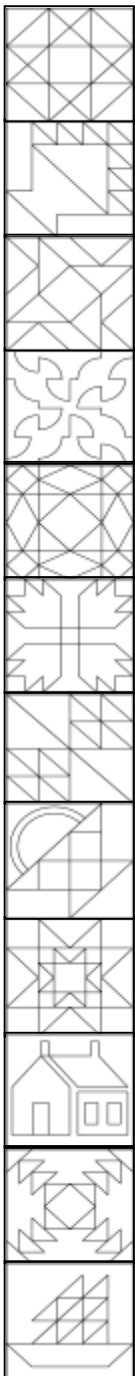
This year's raffle quilt is a wall quilt designed to capture Benton County. It features Marys Peak and a vineyard to demonstrate the emerging wine industry in our county. Guild members Marcia Gilson, Robin Metzger, Shirley Strub, Lynn Kosro, Debbie Zygmuntowicz, Lisa Ullmer, Corey Arentz, Linda Alexander and Cindy McNutt Kaestner designed the quilt together and then individuals worked at home on hand painting the fabric, assembling the background, making basket blocks, three dimensional leaves, grapes and embellishments. Linda Alexander did the machine quilting. The quilt was started in August of 2002 and 80% of the fabrics are hand-dyed with individuals learning how to dye fabric for the first time.

If you are interested in helping to sell tickets, or know of a marketing opportunity to display the quilt for ticket sales please contact the Benton Historical Museum.



## QUILTS FROM CARING HANDS

Open House from 11:00 – 1:30 on June 16<sup>th</sup> Lifespring Foursquare Church, 1495 NW 20<sup>th</sup> St. Corvallis, OR  
*See back cover for details about this celebration!*



# JOIN IN – HELP WITH THE 2005 RAFFLE QUILT

The 2005 Museum Raffle Quilt is under construction, and all Guild members are invited to lend a hand. In keeping with the plans for the 2005 museum quilt show, our design is inspired by the antique quilts in the Cockrell Collection (part of the Horner Collection, now being managed by the Historical Society). The medallion design incorporates elements from several of the Cockrell quilts. It features a contemporary interpretation of the time-honored Whig Rose appliqué block, and adds pieced borders inspired by “Double Nine-Patch” and “Broken Dishes” quilts.

By the time you read this, we hope to have handed out most of our appliqué packets, but if hand appliqué is your thing and you’d like to help, please contact Barbara Bowns ([bbowns@peak.org](mailto:bbowns@peak.org)) or Cathi Roberts (at the Museum, 929-6230) to see if there are still packets available. Also, if you’d like to do some machine piecing, we will soon have nine-patch and broken dishes packets to hand out. Let us know if you’d like to work on these.

Our immediate goal is to send a sample of the appliqué work up to the Sisters Quilt Show with the 2004 quilt, to whet ticket-buyers’ appetites for the following year. Another important goal for the women working on this quilt is to use it to bring Guild members together to learn from each other, so we are planning a series of free workshops on topics that relate to the quilt.

We didn’t plan far enough ahead to get the first workshop on appliqué techniques into the newsletter (sorry!), but we’ll do better next time. Before the quilt goes on the frame this fall, we will definitely do a hand-quilting session. Other possible topics to study before then include “precise piecing” and trapunto & stuffed work. Let us know if these are techniques you want to learn – or can teach to others.

For now, the 2005 Raffle Quilt Committee is meeting Thursday mornings at 9:30 at the Museum Annex. We also meet some Thursday evenings, especially Guild night. If you would like more information about meeting times/dates, contact Barbara or Cathi.

The best way to hone your skills is to join a project like this with other quilters. People who work on the raffle quilts always have a great time, and we learn so much from each other.

**All skill-levels are welcome.**

**Please join us!**



**JanniLou Creations**  
1243 Main P.O.Box 333  
Philomath, OR 97370-0333  
(541)929-3795; fax (541)929-3597

### QUILT SHOP

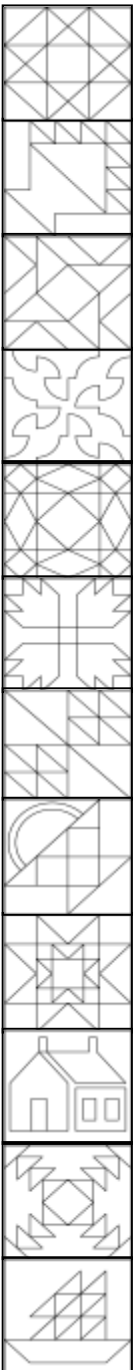
- Great patterns, books, notions & more
- Absolutely beginning to advanced classes
- Mail order catalog

Next time you’re in Philomath, drop by to see us “on location” at the old Waucomah movie theatre building.

*Mon, Wed, Fri and Sat, 9:30a-5:30p  
Tues & Thurs 9:30a-9:00p*

*Admit One  
...or many!*

## So, Do You, Like, Sew?



It must have come to your notice that there are some intriguing and even annoying words and affectations in use now. At the risk of sounding like what I am — well, over 16 years old ..... I must say it mildly aggravates me to hear sentences introduced with “So...”, and to have “like” and “go”, etc., salted liberally into sentence after sentence by young nieces and nephews, but what’s worse is that it is infectious! I’m now hearing other adults saying these things, and I even hear them coming out of my own mouth! If this continues, a conversation at quilt guild might sound something like this:

Quilter #1, “So, did you, like, finish your challenge quilt?”

Quilter #2 answers, “Yep, and it is, like, so hot!”

Quilter #3 interjects, “Wait, did you, like, just go, like ‘so hot?’”

Obviously, this cryptic interchange could go on and on. It occurred to me, however, that it may not be such a bad thing to use those words in conversations with some slight modifications:

“Sew? A hot topic that I like.” Ain’t that the cat’s pajamas?

President  
Linda Hansen

## CALLING ALL QUILTERS!

Every year, MRQG members have the opportunity to show off (and sell!) their work inside the Sisters Drug Company during the fabulous Sisters Outdoor Quilt Show, the second Saturday in July. Our quilts are hung IN-DOORS, away from sun and wind, and you may offer your quilts for sale without a commission charge.

This year, we are asking members to complete an entry form for each quilt by Guild night, Thursday, May 27. To do this, you can either call Cathi Roberts at the Benton County Museum and ask her to mail you a form, or you can come to the Guild meeting with the information you need to fill out a form that night. (Please DON'T bring the quilts themselves until the June meeting!!)

### The information you need is:

- Exhibitor's (owner's) Name
- Maker's Name
- Quilt Name
- Quilted by
- Inspired by (class, book, etc)
- Size: W by L
- Year Made
- Plus any other info (briefly!) you think the viewer/buyer should know.

Your quilts will be displayed inside the drug store the entire week of the Sisters event, July 5 - 10.

We have this great opportunity because the owner of Sisters Drug Company, Tim Muir, grew up in Philomath and cares about the Museum and the Guild. (As a high-school student, Tim helped save the Museum building from being torn down!)

Over the years, tickets on the Museum Raffle quilts sold at the Sisters Drug Company have yielded thousands of dollars to support Quilt County, the Museum's annual quilt show, and other quilt-related exhibits, education programs, and events. In return, the Museum and the Guild have been working together with Tim and his wife Deanna to provide a dynamite show inside their business during Quilt Week.

Please help us make the 2005 show another huge success by getting your entry forms in by May 27.

## WANT ADS

**Singer Featherweight machine** in excellent condition with case and some attachments. \$375 Linda Hansen 929-3129.

**Handi-Quilter**, used twice \$450 Nancy Post 928-3277

**Hand-quilted Wedding ring quilt** in pinks and blues, queen size \$200 Melanie

## SECRET SISTERS NEWS

Have you been wondering who has been giving you gifts all year? Come to the Secret Sister Tea Thursday May 20th at Jannilou Creations from 7:00-8:30 and meet her in person. We will reveal your secret sister's identity. Please bring a thank you gift. If you are unable to attend, we will announce the names of the secret sisters at the May guild meeting and you may bring a thank you gift then. We hope to see you at both events.

Hard to believe, but it's time to sign up to be a secret sister for the coming year. Colleen and I have some new events scheduled for this year and we don't want you to miss out. The secret sister form is included in this newsletter so return it to one of us by June 10th. I think we all enjoyed getting to know each other better and I definitely know more members by name and some of their interests.

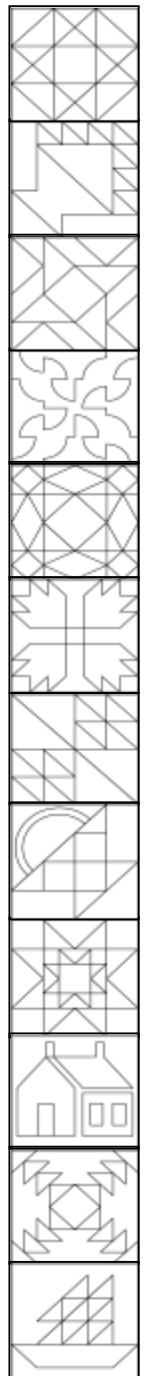
We will have a kick off event at Colleen Mincinski's home on Friday June 18th from 7:00-8:30 or so. Her address is 2930 N.W. Princess St., Corvallis. Please bring an ice cream topping and we'll have ice cream and soda for you. Also, please bring a lawn chair. We're expecting tons of people.

## SECRET SISTER ROUND ROBIN

This was our first attempt at a Round Robin Quilt Group. Those members who participated seemed to have a really good time at it, so we will start up another one for this year. Stay tuned for our first meeting date to be published a little later in the year. We have some surprises in store for you, so make sure you are a part of this trend setting group. No need to be intimidated. We have a lot of laughs and are a low key group. We'd love for you to join us.

Remember to bring your Round Robin quilt to the May guild meeting to show it off and share your experience.

Colleen & Debbie



## Quiltwork Patches



212 SW 3rd Street  
Box 724  
Corvallis, OR 97339  
541-752-4820  
Mon. - Sat.  
9:30 - 5:30

*Lots of Classes!*

Quality 100% Cotton Fabrics  
Quilting Tools & Books

## PLACES TO GO THINGS TO SEE

**May 21-23** Northwest Quilters 2004 Quilt Show  
“Looking Good at 30” weekend at the **Washington County Fairgrounds**, Friday, 10 am-7 pm; Saturday, 10 am-5 pm; Sunday, 10 am-3 pm.

[www.northwestquilters.org/shows/2004/2004.htm](http://www.northwestquilters.org/shows/2004/2004.htm)

**May 29-30** Azalea Quilt Guild’s 20th Anniversary Quilt Show at Kalmiopsis Elementary School, off Highway 101 at 650 Easy St. **Brookings-Harbor**, Saturday, 10:00 am to 5:00 PM & Sunday, 2004 10:00 am to 4:00 PM. Free admission

**May 29-31** Tillamook County Quilt Guild  
“Grandmother’s Treasures”-May 29 - 31, Saturday & Sunday 10am -5pm, Monday 10am -3pm, Sacred Heart Parish Hall, 2407 5th Street, **Tillamook**. Admission: \$3.00 (includes a ticket for the raffle quilt)

**June 4, 5, 6** A Quilter’s Faire Wittenberg Inn 5188 Wittenberg Lane, **Keizer**; June 4, 5, 10:00 - 6:00; Sunday 10:00 - 4:00. Everything to tempt the quilter- Quilt Shops, Sewing and Quilting Machine Dealers, Singer Featherweights, Quilt Frames Long Arm Quilting, Embellishments and Beads, Quilts on Display, Baltimore Album Quilts, Fabric Art, Lectures and Demonstrations; No Admission Fee - Food and Wine.

**June 26-27** Rogue Valley Piecemakers Quilt Show, Rogue River Middle School, 301 Pine Street, **Rogue River** 10am to 4pm

**July 8-13** The Jacksonville Museum Quilters 26th Annual Quilt Show 9:00am to 3:00pm daily, Saturday 10th, Hours 9:00am to 6:00pm - Location Second floor of the U. S. Bank Building 3rd and California Street, **Jacksonville** \$1.00 admission

**July 10, 2004** The 29th Annual Sisters Outdoor Quilt Show-**Sisters** 2004

## PUT YOUR ART ON THE MAP

Oregon Crafted is developing a printed guide for self-directed tours of art galleries, artist studios, and restaurants exhibiting local artists’ work. Make your art and handcrafts more visible.

This guidebook will feature full-color images of your work. Learn more about Oregon Crafted at [www.oregoncrafted.org](http://www.oregoncrafted.org) or call 541-687-8353.

## SIMPLY QUILTS

Linda Johansen will be featured on HGTV’s quilting program Simply Quilts on Monday, May 24<sup>th</sup>. Linda will be demonstrating how to make fabric bowls from her book *Fast, Fun & Easy Fabric Bowls*. The program airs at 8:30 am on channel 67.

## NEW SECRETARY MINDY HAMLIN

Mindy has been quilting for about four years. She enjoys learning new techniques and will try anything once. She lives in Corvallis with her husband and teenage son. When she’s not quilting, she’s spending time with her family enjoying the outdoors or working on their historic 1925 home. Mindy also keeps busy with her day job, working as an engineer at Hewlett-Packard.

## PASTEGA QUILTS

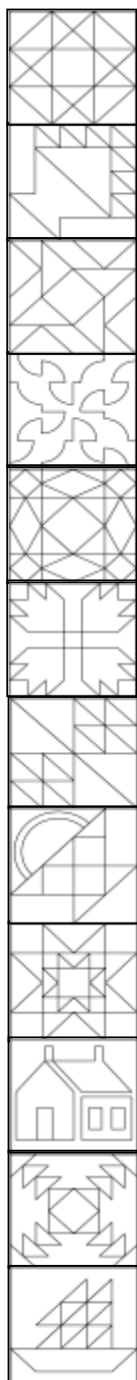
Greetings to all who have volunteered to help with the Mario Pastega Quilts.

We have a few totally completed and labeled quilts turned in. We also have a few quilt tops turned in which are in the process of being quilted. I have many more that have been promised. This is a friendly reminder that June is fast approaching!

If you are working on a quilt, thank you. If it is a quilt top nearing completion and you are not planning to quilt and/or bind it, please contact me and I will let you know who has volunteered to quilt/bind for us. This way you don’t have to wait until the next meeting to turn it in. If you are planning on turning in a totally completed quilt, bless you.

Jan Tallis will print up a quilt label for us to use on these quilts. If you would like it before you put the quilt together please contact Jan with the information to be put on the label.

Thanks again for all you have volunteered to help. Call or e-mail if you have questions.  
Lynn Grube



## LIBRARY NOTES

Have you ever wished you had saved a particular pattern from a back issue of Quilter's Newsletter Magazine (QNM), or wondered if there were any articles about your current quilting question? Well, help is here. The complete **QNM cumulative index**, including supplements through 2002, is now available at the Guild library. It is filed with the last issue of QNM. You can find every pattern that's been published, plus all the subject articles from Adams Collection to Zimbabwe. Have a look. For computer lovers this index is available online at [www.qnm.com/qnmindex](http://www.qnm.com/qnmindex). You can download it to your computer as a .pdf file and use Adobe Reader to search for subjects.

Our library has all Quilter's Newsletter Magazine issues since 1975, except Issue #10D (1978) and Issue #327 (November 2000). If you have one of these issues you no longer want, please donate it to the library.

Lastly, thanks to all who bought some of the older books and magazines that were for sale last year. We've collected \$96.55 since January 2003. Now, if you'll just give me some good ideas for new books.

Harriet Plumley

## NEW BOOKS AT MRQG LIBRARY

We have acquired 21 new books for the library so far this year. Many of the books were donated thanks to Linda Johansen, Judy Juntunen and Jan Tallis. Several new books are worth highlighting for you.

Due to the expressed interest in appliqué books, we have added four new ones. "**Color Blend Appliqué**" by Jane Townswick offers a new way to make flowers vibrate by using various shades of several colors in one flower. The author then shows how to add depth with inking, shadowing and stippling. "**Garden Party: Appliqué Quilts that Bloom**" by Cynthia Tomaszewski provides several new floral and heart designs with lovely embellishments. The sample quilts are shown in spring like pastels and you can choose to use fusible appliqué, freezer-paper appliqué or needle-turn appliqué. "**Wild-flowers: Designs for Appliqué and Quilting**" by Carol Armstrong offers more delicate flower patterns to appliqué and shows some imaginative ways to quilt them. Lastly, "**Pick-A-Pattern Appliqué & Variations**" by Joan Waldman presents several block designs and settings you can select to design your own quilt. Additional tech-



**Oregon Quilting Company**  
**Linda Alexander**  
*Specializing in Longarm Quilting And Custom Quilt Making*  
Corvallis, Oregon 97330  
[www.oregonquilting.com](http://www.oregonquilting.com)  
Phone (541) 745-9081 E-mail: [quiltin4u@attbi.com](mailto:quiltin4u@attbi.com)

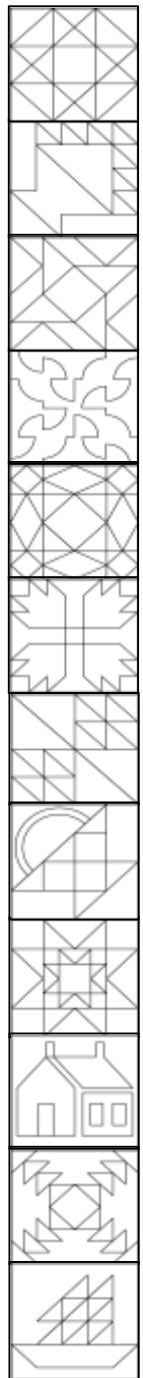
niques of embroidery, redwork, paint, stencils and trapunto are included.

Two books to inspire creative quilt designs are: "**Oxymorons: Absurdly Logical Quilts**" edited by Dianne Hire, a book of unusual techniques from well-known designers, and "**Stack the Deck! Crazy Quilts in 4 Easy Steps**" by Karla Alexander, the book used in the May workshop that promotes stacking, slicing and shuffling of fabric to create striking designs.

For people working on the "Block of the Month Swap" or those looking for ways to use up old blocks, we bought "**Setting Solutions**" by Sharyn Craig. This book presents 10 project maps that allow testing your blocks in various settings and has helpful tips about color clashes, setting triangle measurements, orphans and more. "**Choosing Quilting Designs**", a Rodale Successful Quilting Library book, offers some well-organized tips for determining what quilt designs might look best on certain patterns. For those of us who find these things perplexing, these Rodale books can provide some handy "rules-of-thumb".

For dessert we acquired "**Whitework Quilting**" by Karen Tavish. This lavishly illustrated book features wholecloth machine-quilted beauties, including one by Linda Alexander. A few techniques are presented including shadow trapunto and the examples are gorgeous. Definitely a book to browse through with a piece of cake.

Harriet



MAY 2004

S	M	T	W	T	F	S
						1
2	3	4	5	6	7	8
9	10	11	12	13	14	15
16	17	18	19	20	21	22
23	24	25	26	27	28	29
30	31					

JUNE 2004

S	M	T	W	T	F	S
		1	2	3	4	5
6	7	8	9	10	11	12
13	14	15	16	17	18	19
20	21	22	23	24	25	26
27	28	29				

[www.peak.org/~mrqg/](http://www.peak.org/~mrqg/)

Deadline  
Copy and ads for the  
Newsletter:  
July 9, 2004

## FUTURE PROGRAMS

**May 27th - Bob Purcell**, owner of Superior Threads from St. George, Utah is our guest speaker. Learn to achieve those perfect stitches with the proper tension & other helpful hints with Bob's help in Thread Education.

**June 24th - Our own Dr. Elizabeth Hoffman** - Liz will be giving an informative presentation on the Elizabeth Saville Lewis quilts (aka Cockrell Quilt collection).

## QUILTS FROM CARING HANDS

Marys River Guild members are invited to a celebration. Founder June Nielsen is being honored by Harlequin Enterprises LTD as one of five recipients of the More Than Words award. On June 16<sup>th</sup>, please join in recognizing June and all members who have helped to make QCH a success the past thirteen years. There will be an Open House from 11 – 1:30 at the Lifespring Foursquare Church, 1495 NW 20<sup>th</sup> St. with the recognition ceremony taking place at 12:15.

*Meetings begin at 7:15 pm*

*Social 1/2 hour starts at 6:45 pm*

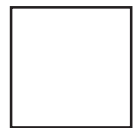
*“Show and Tell” happens at every meeting*

MRQG members can place an ad in this newsletter for free.  
Please send text to [jantallis1@comcast.net](mailto:jantallis1@comcast.net)  
or mail to Jan Tallis, 3550 Tanager, Corvallis, OR 97330.



### Marys River Quilt Guild

PO Box 1317  
Philomath, OR 97370



## First Class

### *Our Mission is:*

- ◆ To contribute to the knowledge of quilting and the textile arts.
- ◆ To promote the appreciation of fine quilts and quiltmaking.
- ◆ To contribute to the growth and knowledge of the art and the industry through educational meetings and fellowship.

